

Automatan

Model 8166

Litho Label Laminator

Handle the largest litho label without skip feed operation

YOUR PARTNER OF CHOICE



SUMMARY

The Automatan Model 8166 is shown with board feeder, laminating unit, label feeder and straight through discharge to optional upstacker. This model full mounts or spot mounts litho labels to doubleface corrugated board. It delivers "Large Format" litho labels (81" wide x 66" thru) with NO SKIP FEED operation required.

A Single Source Drive Controller simplifies the electrical system design and operating programs. A display panel provides the operator with easy to use menus and screens for fingertip control of the laminating process. The machine design, utilizing off the shelf electronics and mechanical components, simplifies maintenance and reduces cost. The Model 8166 has stationary machine components with tilt-down transfer units allow easy access for machine set-up, equipment additions, clean-up and routine maintenance.

BENEFITS

- High productivity with precise registration and low waste adds up to real value
- Wide board and label size range for maximum versatility to fit your customers' packaging needs
- Proven AC drive technology for high reliability with low maintenance
- Single Source drive Controller simplifies the electrical system design and operating programs
- Display panel provides the operator with easy-to-use menus and screens for fingertip control of the laminating process
- Machine design, utilizing off-the-shelf electronics and mechanical components, simplifies maintenance and reduces costs
- Stationary machine components with tilt-down transfer units allow easy access for machine set-up, equipment additions, clean-up and routine maintenance
- Cost savings from power regeneration servo system

Model 8166

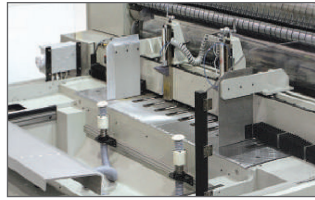
Engineering Solutions for your Success.

THE SYSTEM INCLUDES

- Automatic board and label feeders
- Automatic corrugated sheet stacker
- Cycle speed of 4,500 per hour
- Registration of +/- .040" (1mm)
- Straight thru discharge
- Catwalk
- Video touch screen

OPTIONS

- Removable singleface module
- Extended format upstacker



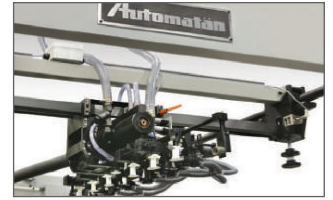
BOARD FEEDER

Independent servo, open concept design and easy accessibility.



LAMINATOR SECTION

Cam driven laminator ensures accurate timing .



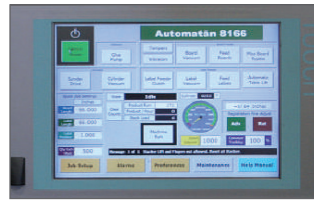
TRAIL EDGE LITHO FEEDER

Independent suction valves provide consistent feeding of litho sheets, increased speed and fast set-ups.



LARGE FORMAT

The 8166 can handle large formats up to 90" (2280 mm) across and 66" through, at high speeds, without skipfeed operation.



VIDEO TOUCH SCREEN

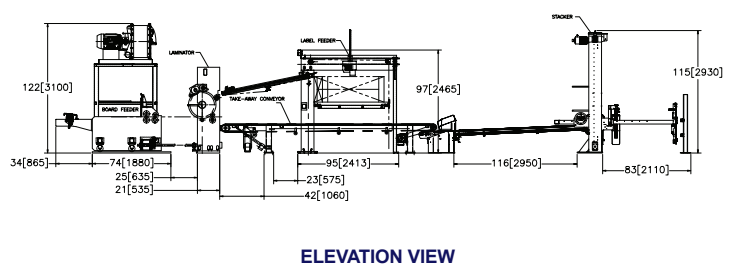
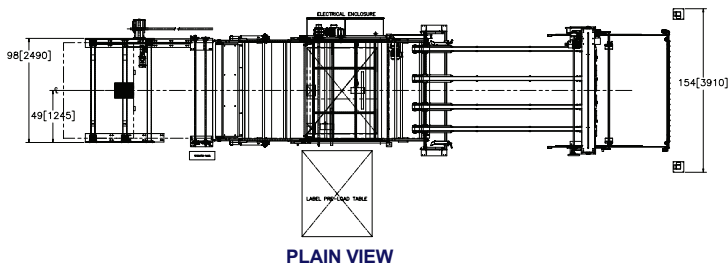
15" Full-featured Touch Screen monitor for simple operator controls.



LITHO SHEET PRELOAD SYSTEM

Quick changeovers are standard on this ergonomically friendly system with adjustable height and moveable air-deck.

MODEL 8166 LITHO LABEL LAMINATOR



FORMAT SIZES	LABEL	BOARD
Minimum	8" x 8" (205mm x 205mm)	18" x 14" (460mm x 360mm)
Maximum	66" x 81" (1670mm x 2050mm)	66" x 90" (1670mm x 2280mm)
With Skip Feed	66" x 81" (1670mm x 2050mm)	138" x 90" (3505mm x 2280mm)
Min. Thickness - Vacuum Chest	.004" (.012mm) [100 gsm]	.024" (.610mm)
Max. Thickness	.024" (.610mm) [420 gsm]	.750" (19.0mm)
PHYSICAL SIZE	POWER REQUIREMENTS	AIR REQUIREMENTS
Minimum	380-480 Volt 50/60 Hz 150 Amp.	90 psi 60scfm (1700 lpm)

